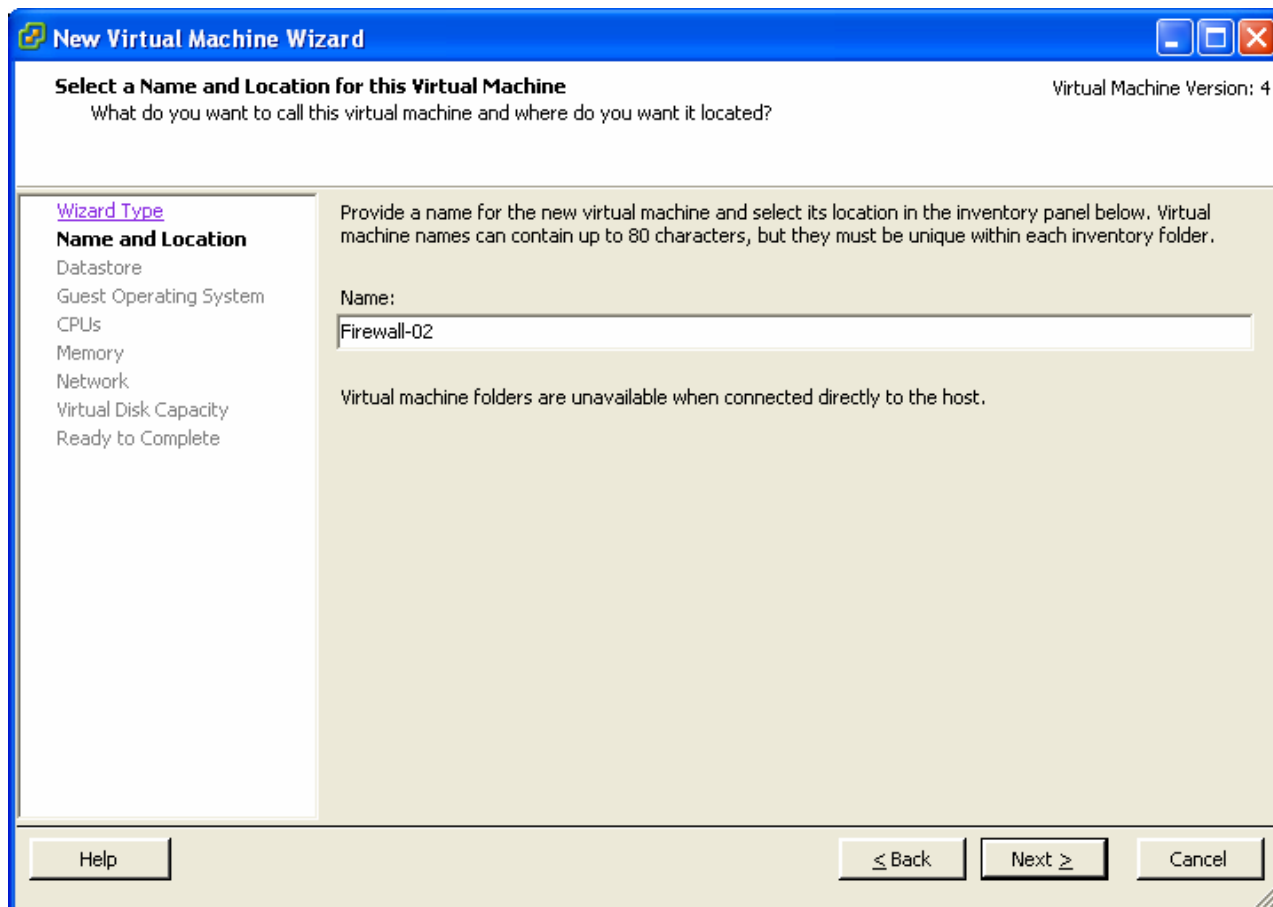
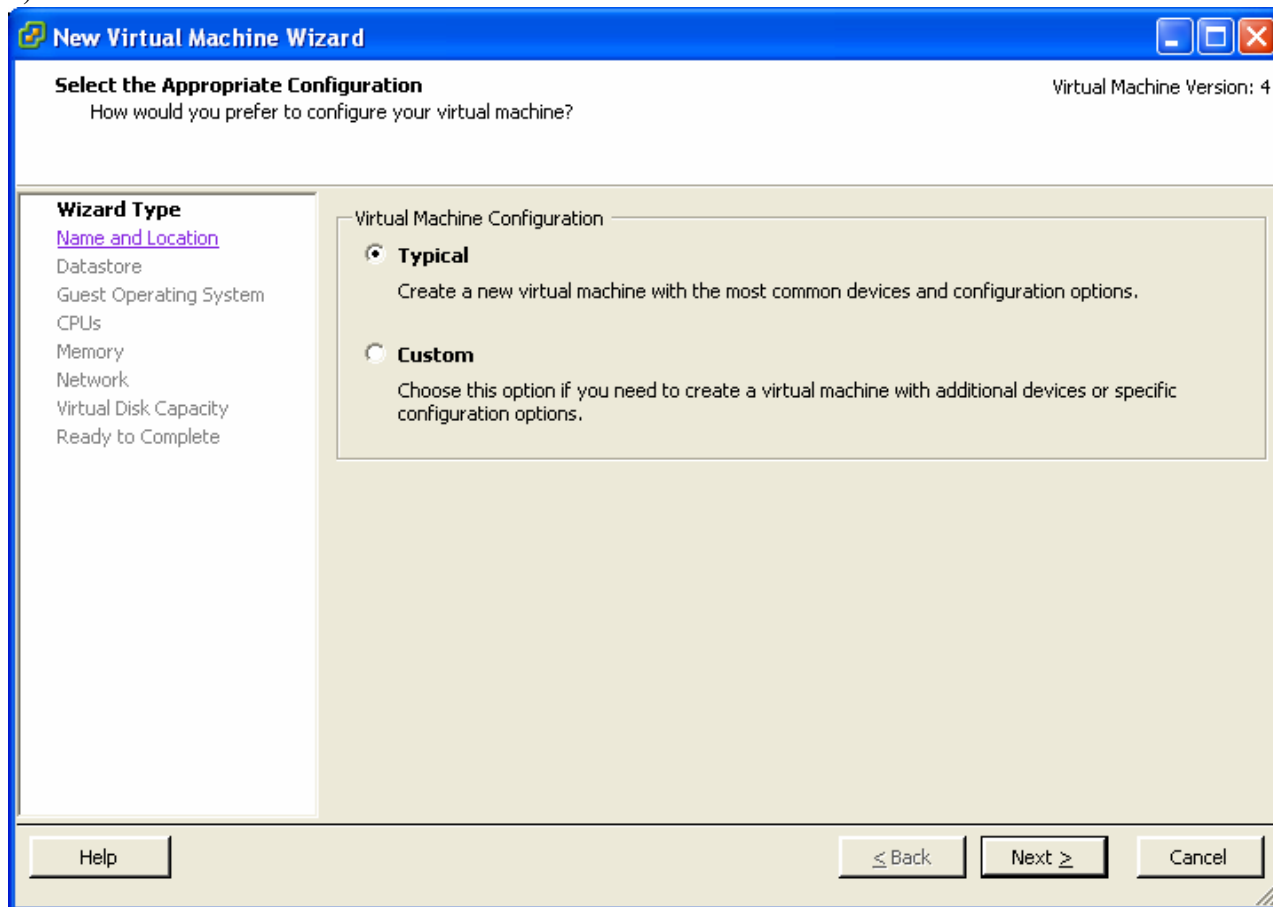
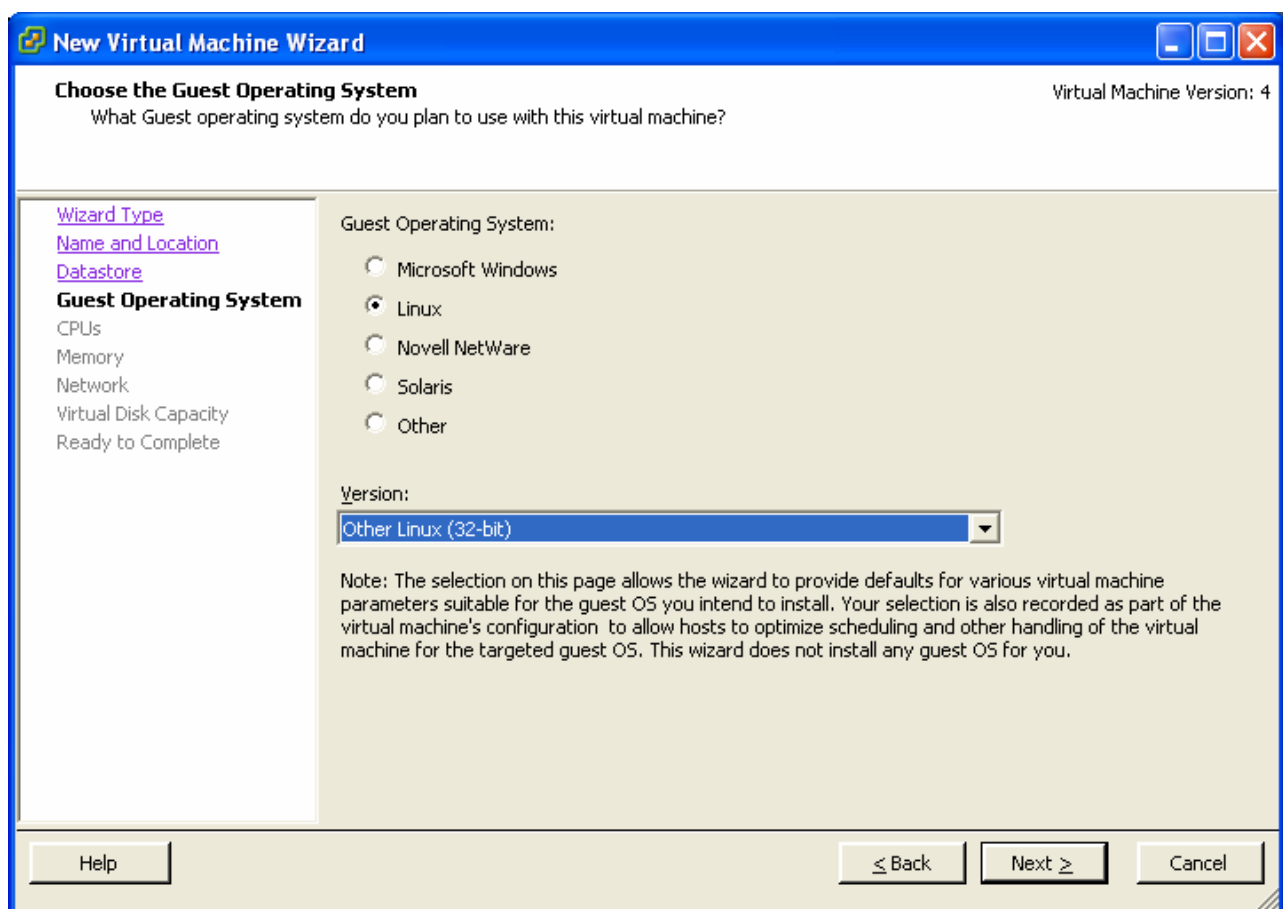
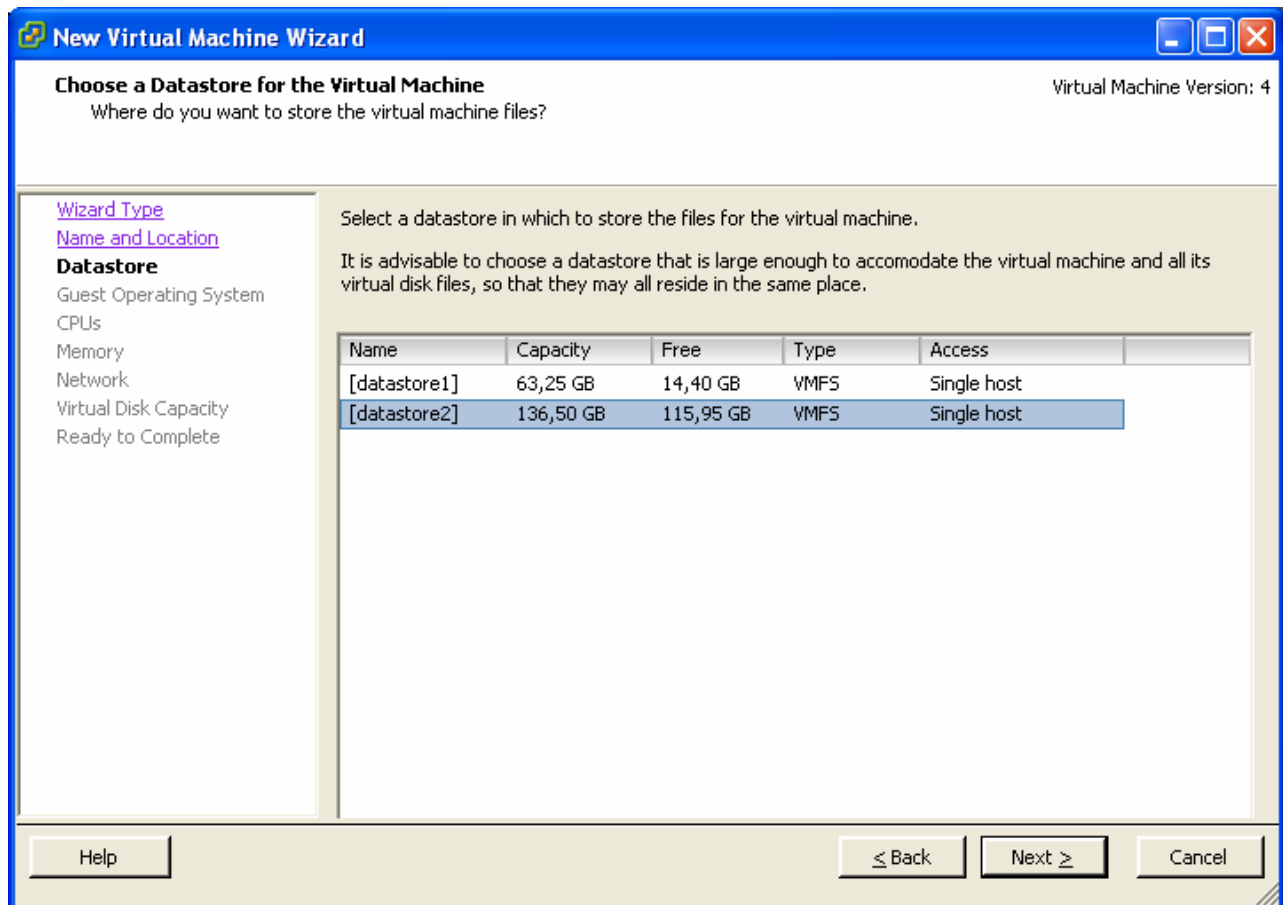


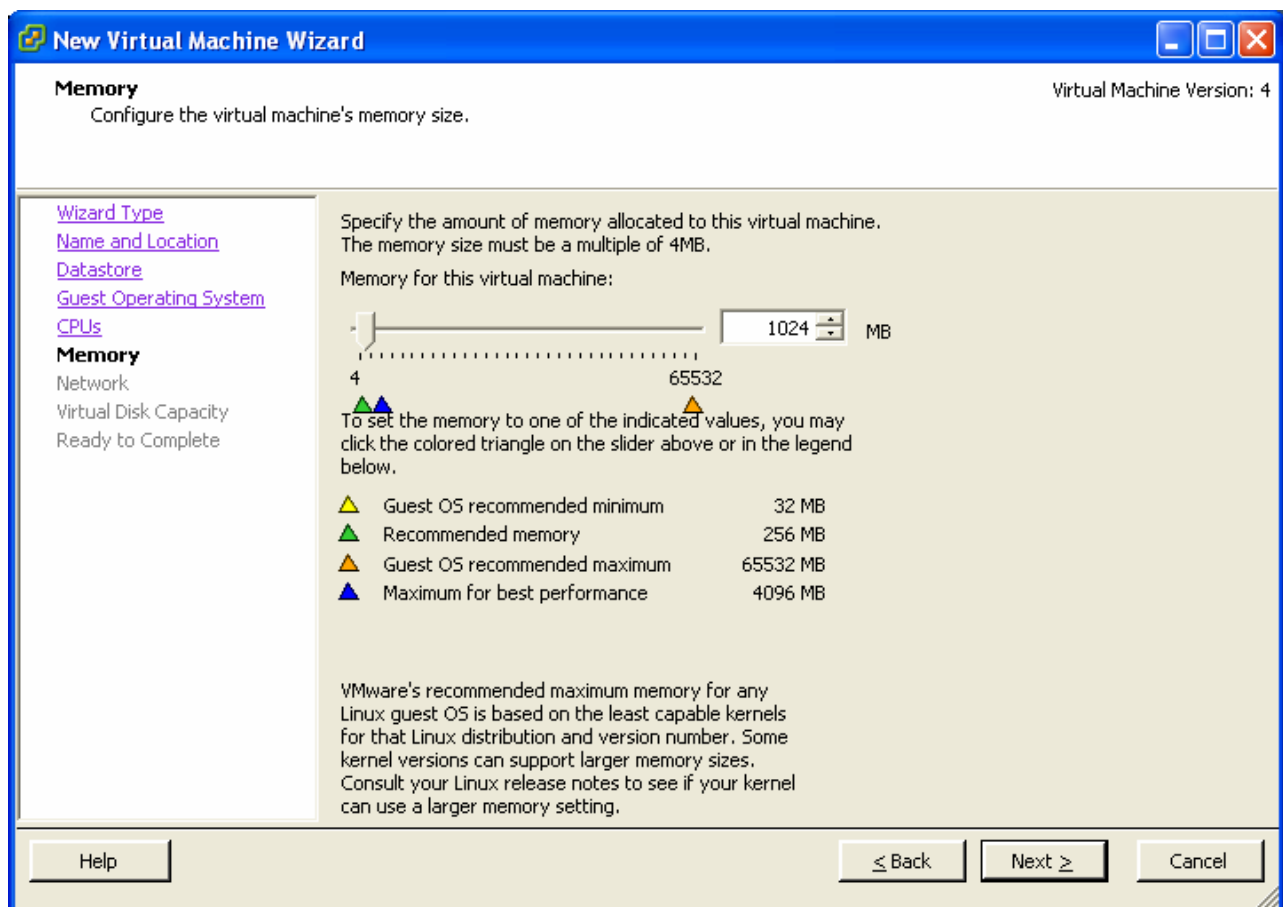
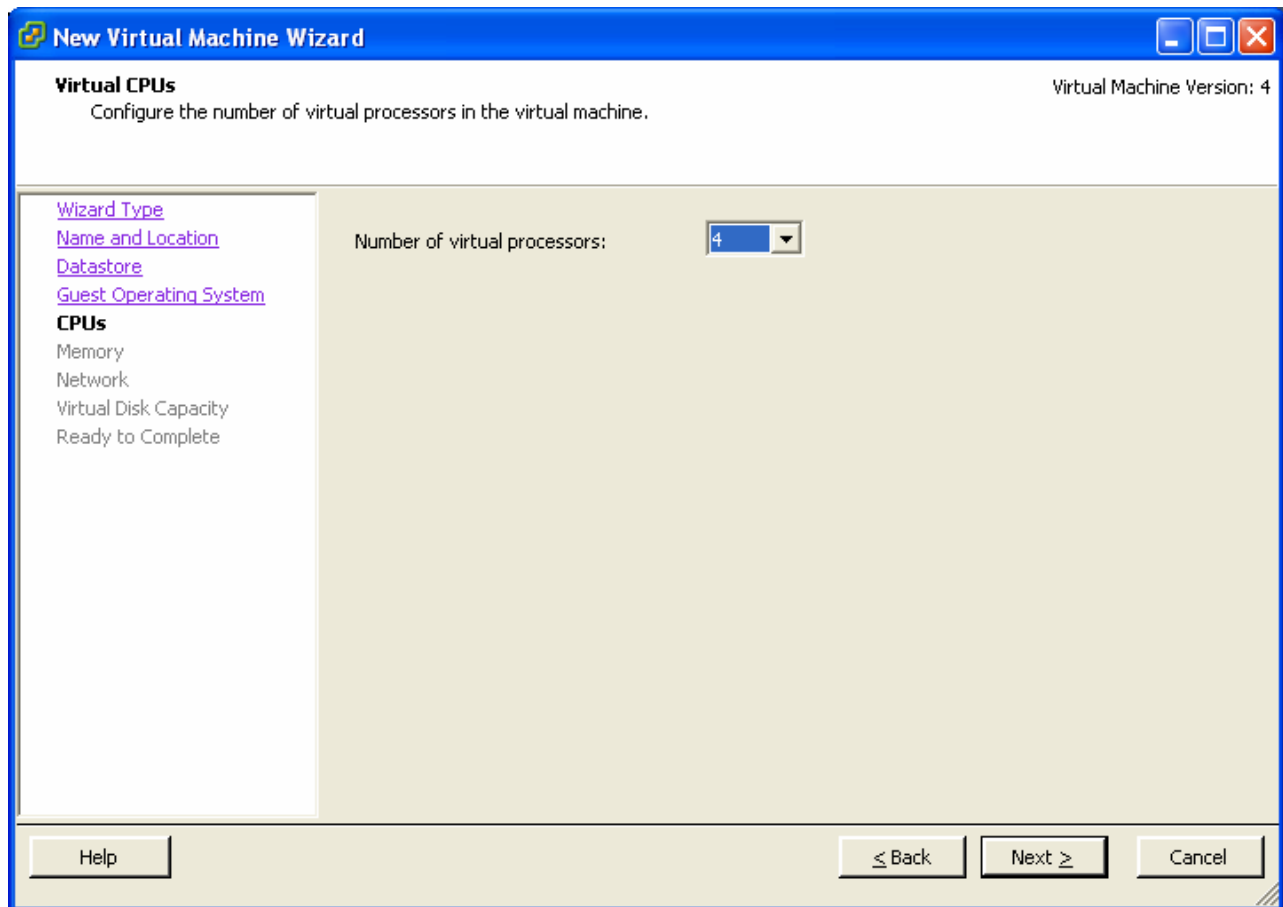
Come configurare Zeroshell su VMware ESXi 3.5

Redatto da: Nicola Carlino

1) Creare la VM dall'interfaccia di VMware VI







New Virtual Machine Wizard

Virtual Machine Version: 4

Choose Networks

Which network connections will be used by the virtual machine?

[Wizard Type](#)
[Name and Location](#)
[Datastore](#)
[Guest Operating System](#)
[CPUs](#)
[Memory](#)
Network
 Virtual Disk Capacity
 Ready to Complete

Create Network Connections

How many NICs do you want to connect?

	Network	Adapter	Connect at Power On
NIC 1:	VM Network	Flexible	<input checked="" type="checkbox"/>
NIC 2:	VM Network	Flexible	<input checked="" type="checkbox"/>
NIC 3:	VM Network	Flexible	<input checked="" type="checkbox"/>
NIC 4:	VM Network	Flexible	<input checked="" type="checkbox"/>

Adapter choice can affect both networking performance and migration compatibility. Consult the [VMware KnowledgeBase](#) for more information on choosing among the network adapters supported for various guest operating systems and hosts.

New Virtual Machine Wizard

Virtual Machine Version: 4

Define Virtual Disk Capacity

What size do you want this virtual disk to be?

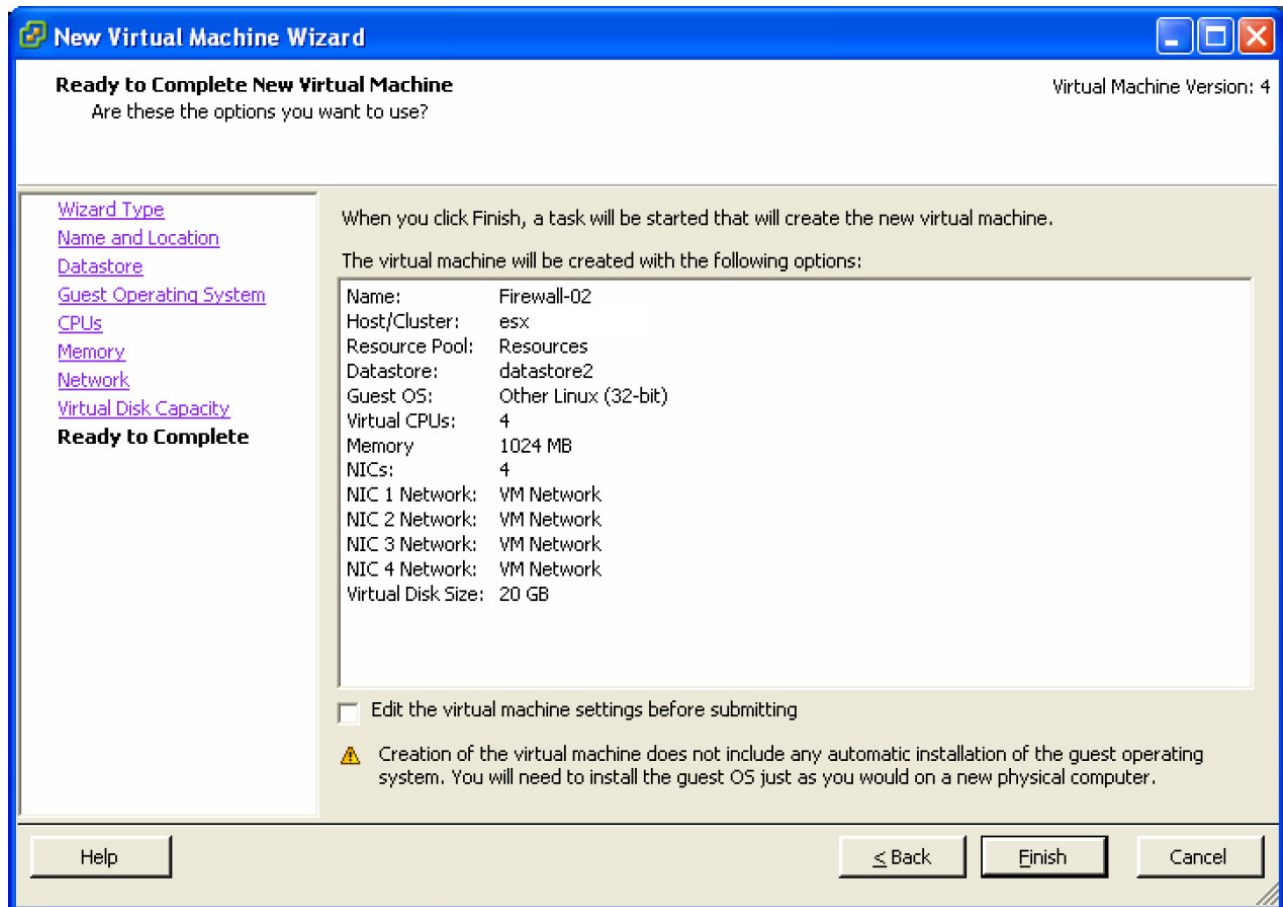
[Wizard Type](#)
[Name and Location](#)
[Datastore](#)
[Guest Operating System](#)
[CPUs](#)
[Memory](#)
[Network](#)
Virtual Disk Capacity
 Ready to Complete

Set the maximum size for the virtual disk.

Datastore:

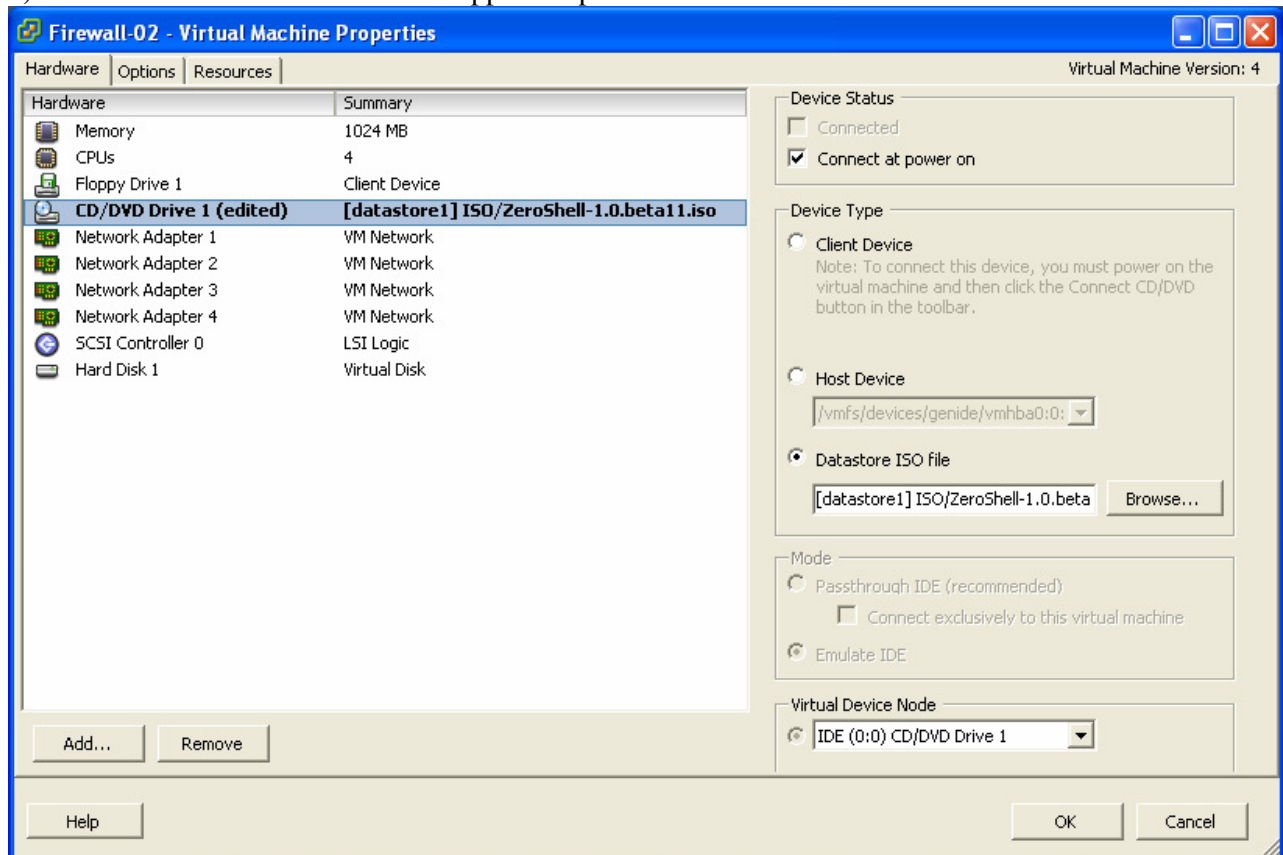
Available Space (GB):

Disk Size:



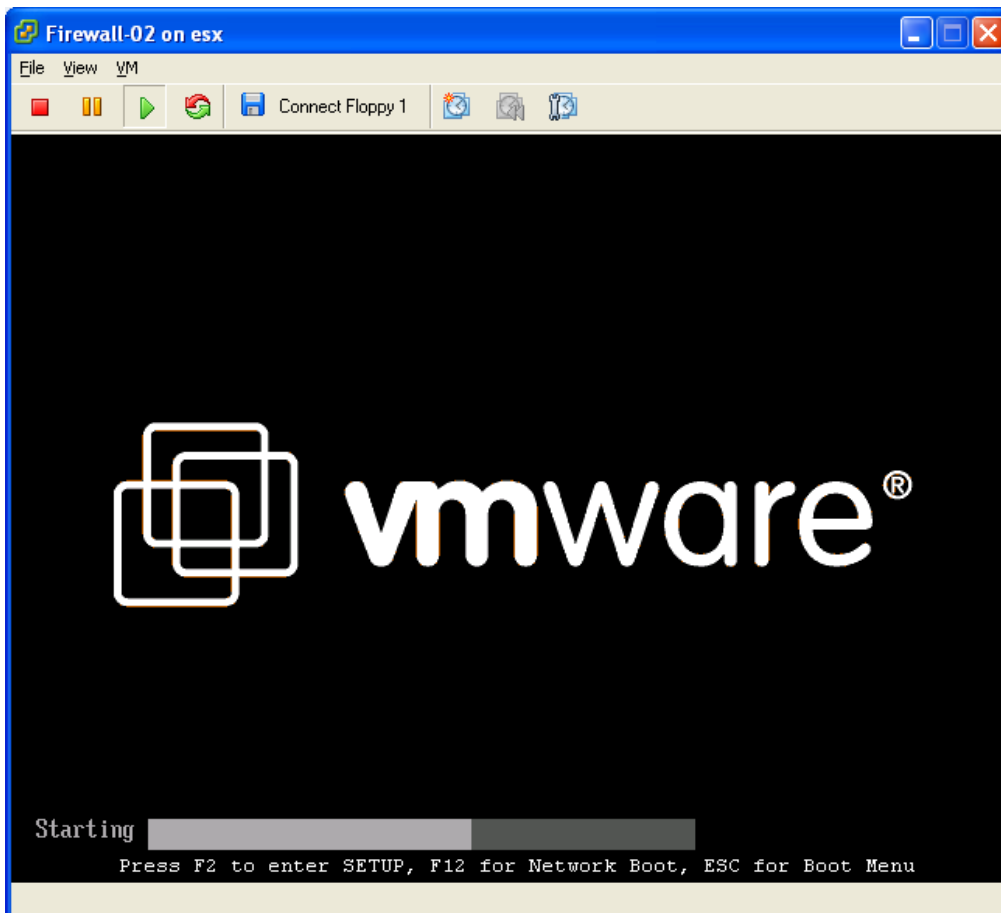
2) Copiare l'iso sul server ESXi

3) Montare il CD della VM con l'iso appena copiata

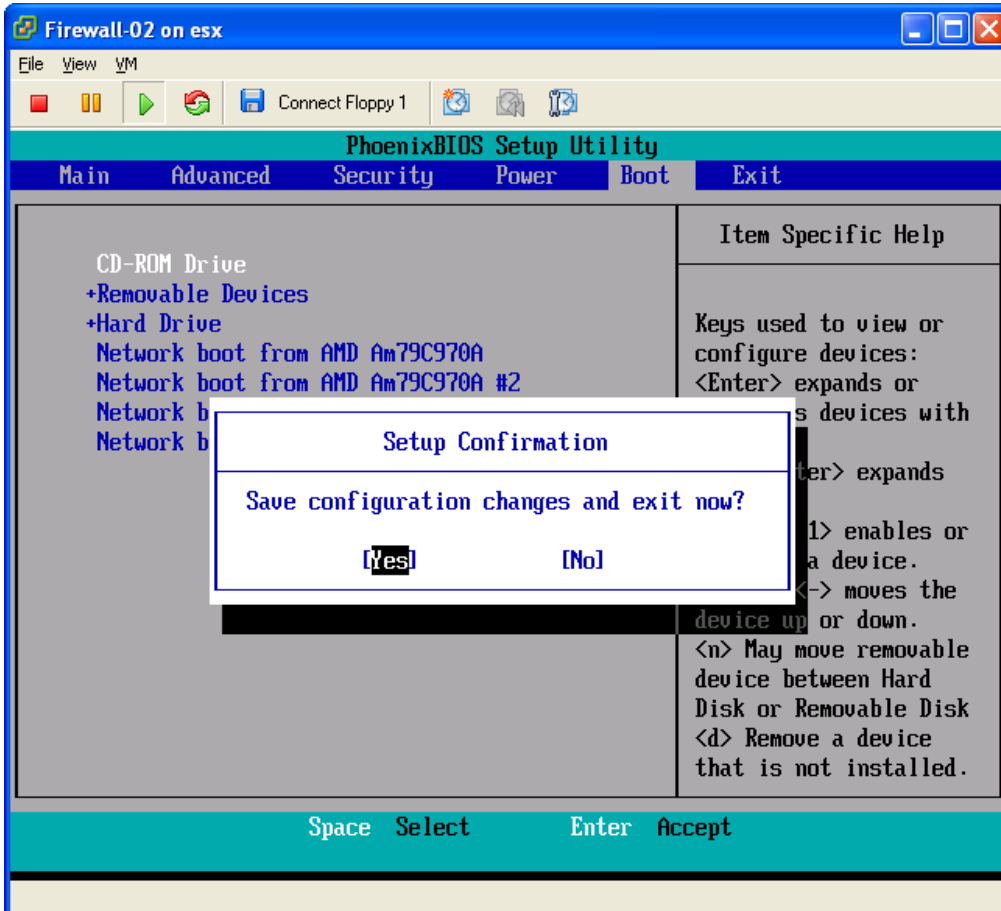


NOTA: Ricordarsi di Spuntare "Connect at power on"

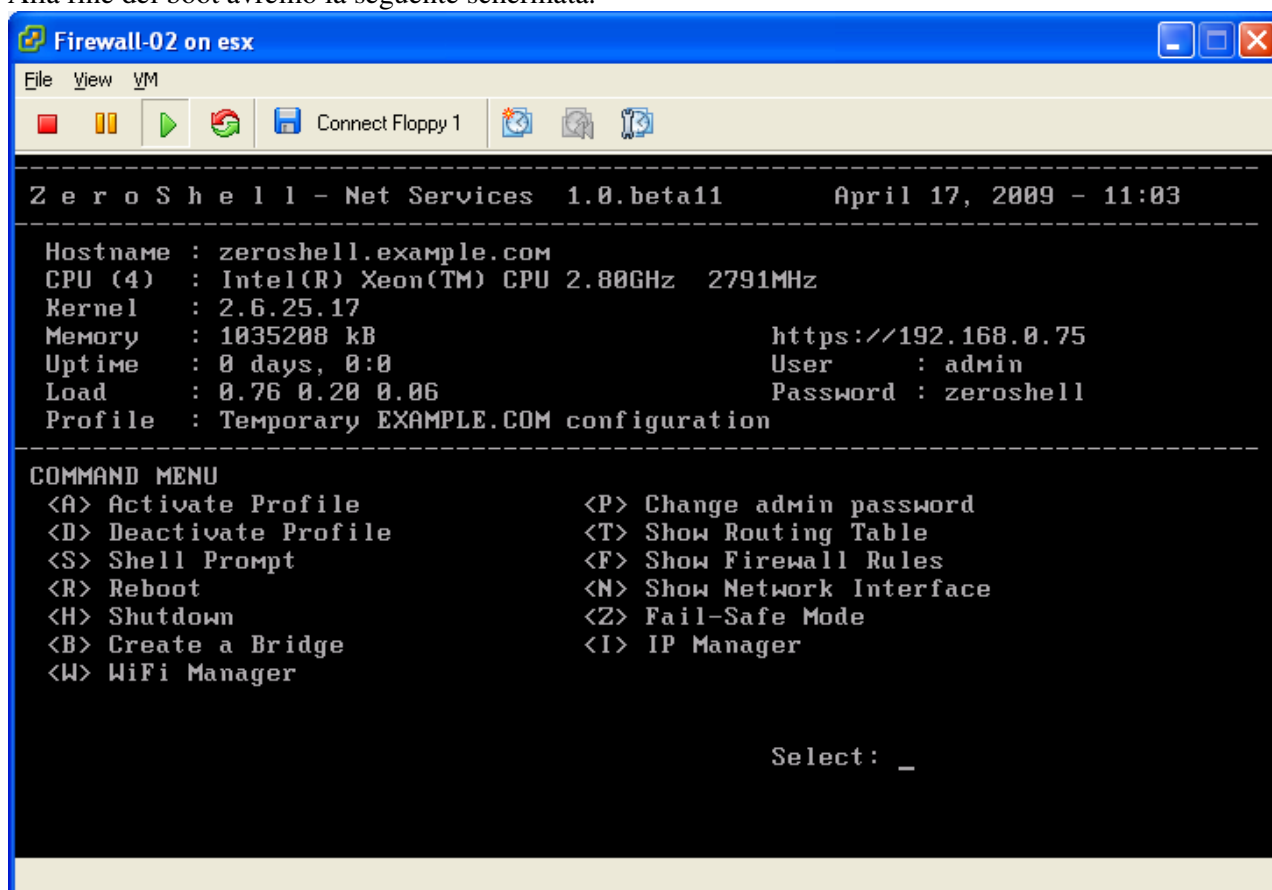
4) Avviare la VM



All'avvio schiacciare il tasto F2 e modificare da BIOS il boot in modo da far avviare la VM da CD.



Alla fine del boot avremo la seguente schermata.

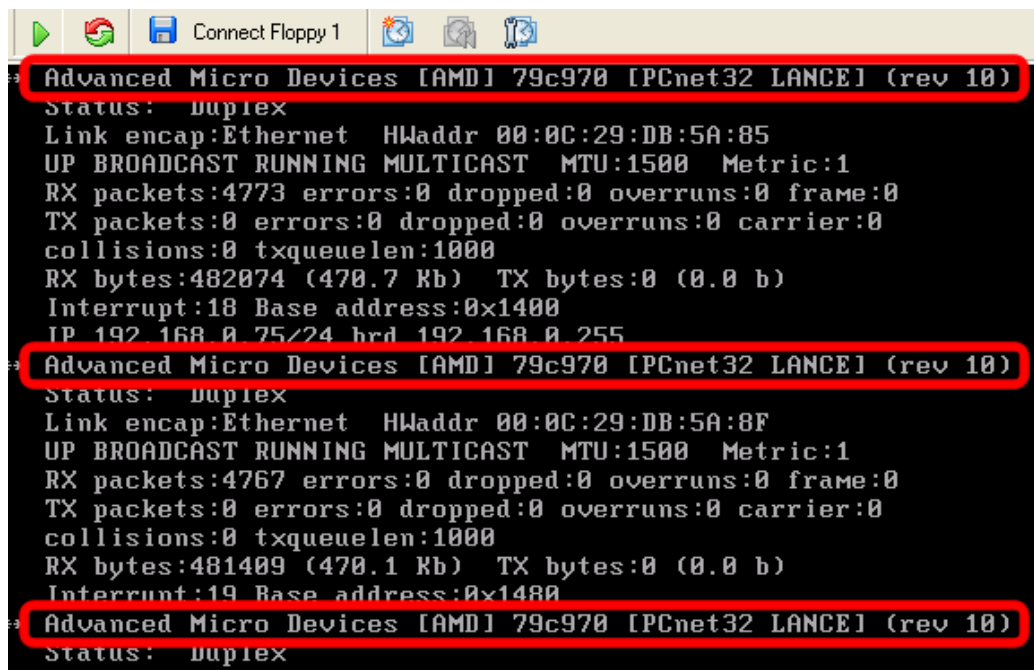


```
Firewall-02 on esx
File View VM
Connect Floppy 1
-----
Z e r o S h e l l - Net Services 1.0.beta11 April 17, 2009 - 11:03
-----
Hostname : zeroshell.example.com
CPU (4) : Intel(R) Xeon(TM) CPU 2.80GHz 2791MHz
Kernel : 2.6.25.17
Memory : 1035208 kB https://192.168.0.75
Uptime : 0 days, 0:0 User : admin
Load : 0.76 0.20 0.06 Password : zeroshell
Profile : Temporary EXAMPLE.COM configuration
-----
COMMAND MENU
<A> Activate Profile <P> Change admin password
<D> Deactivate Profile <T> Show Routing Table
<S> Shell Prompt <F> Show Firewall Rules
<R> Reboot <N> Show Network Interface
<H> Shutdown <Z> Fail-Safe Mode
<B> Create a Bridge <I> IP Manager
<W> WiFi Manager

Select: _
```

- 5) Installare Zeroshell sull'hd (come indicato in altri manuali)
- 6) Configurare zeroshell (come indicato in altri manuali)
- 7) Riavviare zeroshell (per verificare che sia tutto ok)
- 8) Verificare che le regole create funzionano

Nota: Di default le schede di rete che vengono montate da ESXi sono le AMD PCNet da 100 Mbit/s; se sul vostro server ci sono schede Intel Gigabit è possibile sostituire le schede virtuali di default con delle "e1000".

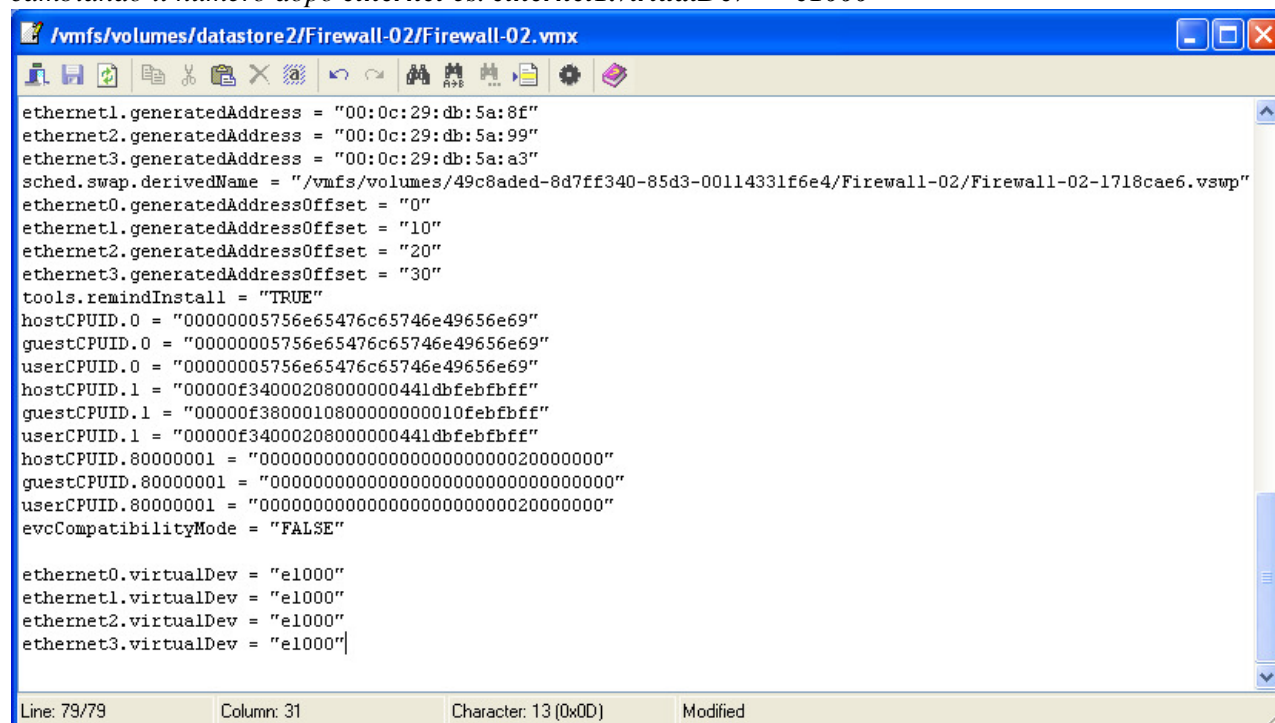


```
Connect Floppy 1
Advanced Micro Devices [AMD] 79c970 [PCnet32 LANCE] (rev 10)
Status: duplex
Link encap:Ethernet HWaddr 00:0C:29:DB:5A:85
UP BROADCAST RUNNING MULTICAST MTU:1500 Metric:1
RX packets:4773 errors:0 dropped:0 overruns:0 frame:0
TX packets:0 errors:0 dropped:0 overruns:0 carrier:0
collisions:0 txqueuelen:1000
RX bytes:482074 (470.7 Kb) TX bytes:0 (0.0 b)
Interrupt:18 Base address:0x1400
IP 192.168.0.75/24 brd 192.168.0.255
Advanced Micro Devices [AMD] 79c970 [PCnet32 LANCE] (rev 10)
Status: duplex
Link encap:Ethernet HWaddr 00:0C:29:DB:5A:8F
UP BROADCAST RUNNING MULTICAST MTU:1500 Metric:1
RX packets:4767 errors:0 dropped:0 overruns:0 frame:0
TX packets:0 errors:0 dropped:0 overruns:0 carrier:0
collisions:0 txqueuelen:1000
RX bytes:481409 (470.1 Kb) TX bytes:0 (0.0 b)
Interrupt:19 Base address:0x1400
Advanced Micro Devices [AMD] 79c970 [PCnet32 LANCE] (rev 10)
Status: duplex
Link encap:Ethernet HWaddr 00:0C:29:DB:5A:88
```


Modifica delle schede ethernet virtuali

- 1) Spegner la VM
- 2) Modificare il file .vmx della VM con un editor ed inserire alla fine del file la seguente voce:
ethernet0.virtualDev = "e1000"

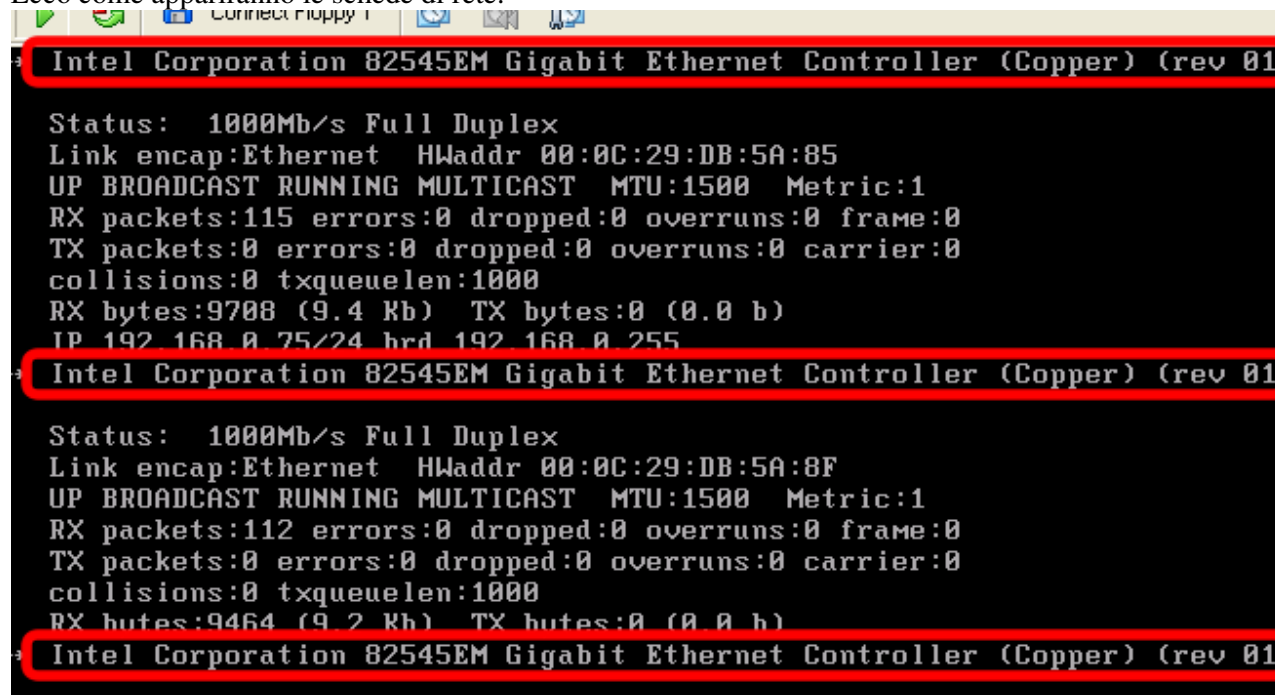
Nota: Bisogna inserire una riga per quante sono le schede di rete virtuali configurate sulla VM (max 4) cambiando il numero dopo ethernet es. ethernet1.virtualDev = "e1000"



```
ethernet1.generatedAddress = "00:0c:29:db:5a:8f"
ethernet2.generatedAddress = "00:0c:29:db:5a:99"
ethernet3.generatedAddress = "00:0c:29:db:5a:a3"
sched.swap.derivedName = "/vmfs/volumes/49c8aded-8d7ff340-85d3-00114331f6e4/Firewall-02/Firewall-02-1718cae6.vswp"
ethernet0.generatedAddressOffset = "0"
ethernet1.generatedAddressOffset = "10"
ethernet2.generatedAddressOffset = "20"
ethernet3.generatedAddressOffset = "30"
tools.remindInstall = "TRUE"
hostCpuID.0 = "00000005756e65476c65746e49656e69"
guestCpuID.0 = "00000005756e65476c65746e49656e69"
userCpuID.0 = "00000005756e65476c65746e49656e69"
hostCpuID.1 = "00000f34000208000000441dbfebfbff"
guestCpuID.1 = "00000f380001080000000010febfbff"
userCpuID.1 = "00000f34000208000000441dbfebfbff"
hostCpuID.80000001 = "00000000000000000000000020000000"
guestCpuID.80000001 = "00000000000000000000000000000000"
userCpuID.80000001 = "00000000000000000000000020000000"
evcCompatibilityMode = "FALSE"

ethernet0.virtualDev = "e1000"
ethernet1.virtualDev = "e1000"
ethernet2.virtualDev = "e1000"
ethernet3.virtualDev = "e1000"
```

Ecco come appariranno le schede di rete.



```
Intel Corporation 82545EM Gigabit Ethernet Controller (Copper) (rev 01)
Status: 1000Mb/s Full Duplex
Link encap:Ethernet HWaddr 00:0C:29:DB:5A:85
UP BROADCAST RUNNING MULTICAST MTU:1500 Metric:1
RX packets:115 errors:0 dropped:0 overruns:0 frame:0
TX packets:0 errors:0 dropped:0 overruns:0 carrier:0
collisions:0 txqueuelen:1000
RX bytes:9708 (9.4 Kb) TX bytes:0 (0.0 b)
IP 192.168.0.75/24 brd 192.168.0.255

Intel Corporation 82545EM Gigabit Ethernet Controller (Copper) (rev 01)
Status: 1000Mb/s Full Duplex
Link encap:Ethernet HWaddr 00:0C:29:DB:5A:8F
UP BROADCAST RUNNING MULTICAST MTU:1500 Metric:1
RX packets:112 errors:0 dropped:0 overruns:0 frame:0
TX packets:0 errors:0 dropped:0 overruns:0 carrier:0
collisions:0 txqueuelen:1000
RX bytes:9464 (9.2 Kb) TX bytes:0 (0.0 b)

Intel Corporation 82545EM Gigabit Ethernet Controller (Copper) (rev 01)
```